

# Human GARP (Y137H&S138G&G139N) & Latent TGF Beta 1 Complex Protein



Cat. No. GAT-HM405

## Description

<b>Source</b>	Recombinant Human GARP(Y137H&S138G&G139N)&Latent TGF Beta 1 Complex Protein is expressed from HEK293 with His tag and Avi tag at the C-Terminus. It contains His20-Leu628 (GARP(Y137H&S138G&G139N)) & Leu30-Ser390 (Latent TGF beta 1).
<b>Accession</b>	Q14392(GARP(Y137H&S138G&G139N))&P01137(Latent TGF beta 1)
<b>Molecular Weight</b>	The protein has a predicted MW of 70.3 kDa (GARP(Y137H&S138G&G139N))&41.4 kDa (Latent TGF Beta 1). Due to glycosylation, the protein migrates to 75-80 kDa (GARP(Y137H&S138G&G139N))&15 kDa&43-47 kDa (Latent TGF Beta 1) based on Bis-Tris PAGE result.
<b>Endotoxin</b>	Less than 1EU per µg by the LAL method.
<b>Purity</b>	> 95% as determined by Bis-Tris PAGE > 95% as determined by HPLC

## Formulation and Storage

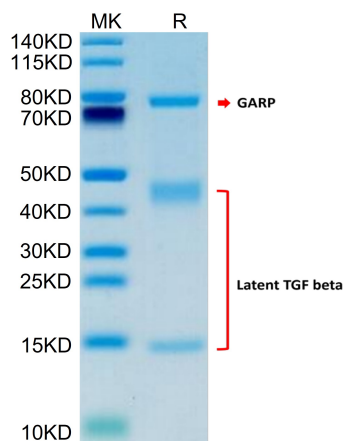
<b>Formulation</b>	Lyophilized from 0.22µm filtered solution in PBS (pH 7.4). Normally 8% trehalose is added as protectant before lyophilization.
<b>Reconstitution</b>	Centrifuge the tube before opening. Reconstituting to a concentration more than 100 µg/ml is recommended. Dissolve the lyophilized protein in distilled water.
<b>Storage</b>	-20 to -80°C for 12 months as supplied from date of receipt. -80°C for 3 months after reconstitution. Recommend to aliquot the protein into smaller quantities for optimal storage. Please minimize freeze-thaw cycles.

## Background

GARP&Latent TGF Beta is a complex found on surface of many types of cells. In Tregs, GARP is involved in TCR-mediated activation of Latent TGF-β and thus promoting secretion and activation of TGF-β. Integrin αβ8 on the surface of immune cells and other cells recognizes RGD in LAP, resulting in the release of mature TGF-β from the TGF-β&GARP complex.

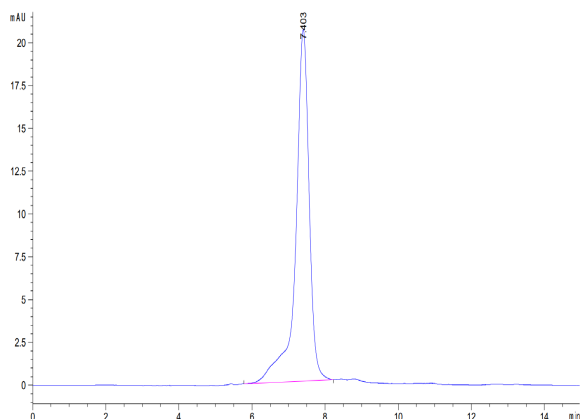
## Assay Data

### Bis-Tris PAGE



Human GARP (Y137H&S138G&G139N) & Latent TGF Beta 1 Complex on Bis-Tris PAGE under reduced condition. The purity is greater than 95%.

### SEC-HPLC



The purity of Human GARP (Y137H&S138G&G139N) & Latent TGF Beta 1 Complex is greater than 95% as determined by SEC-HPLC.